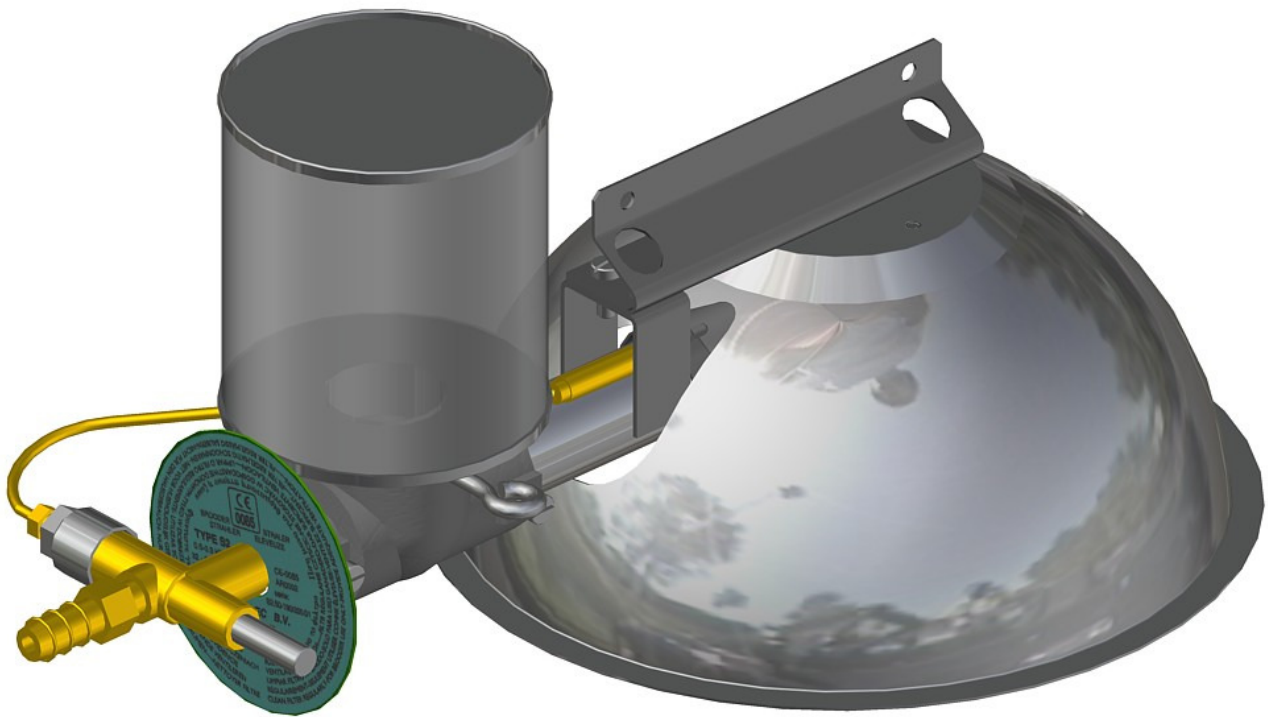
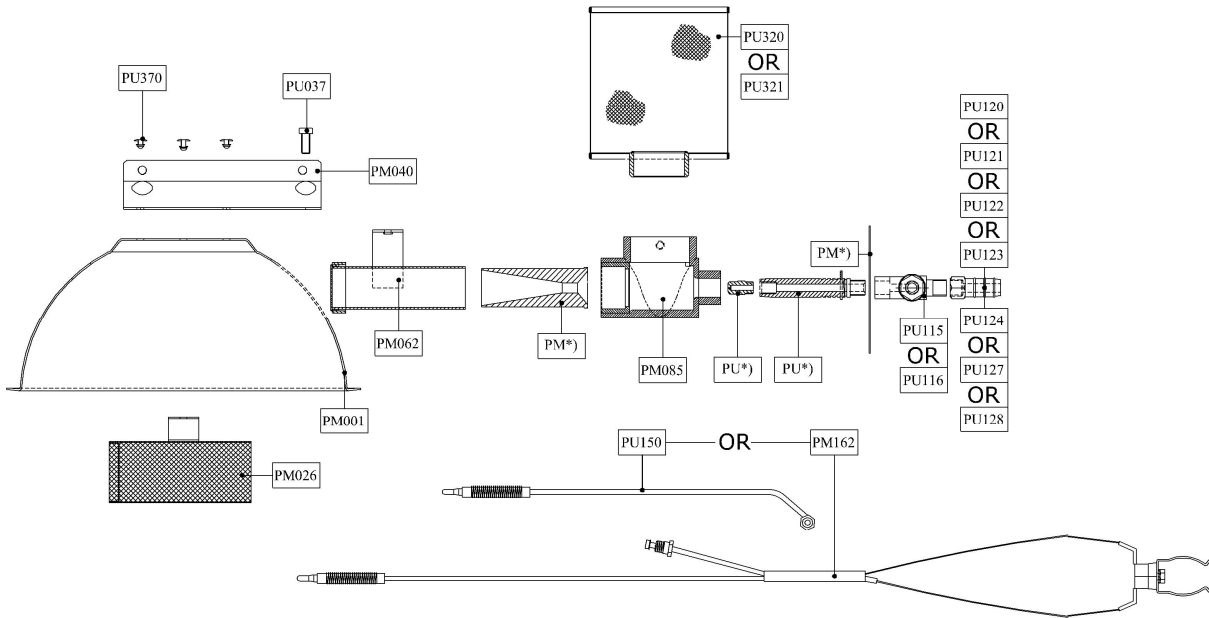




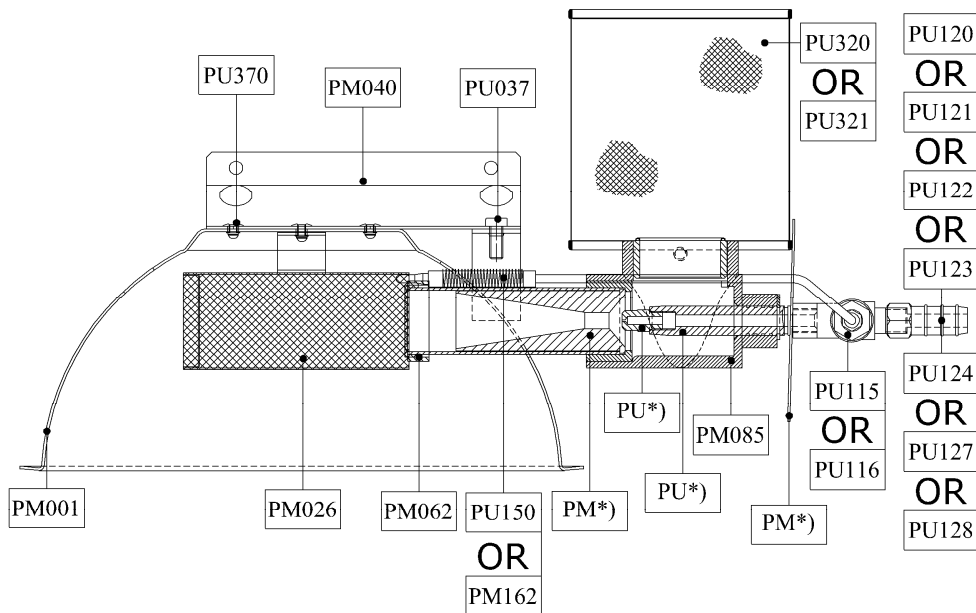
Infrared Heater M2



A Infrared Heater M2



B Infrared Heater M2



Parts List M2

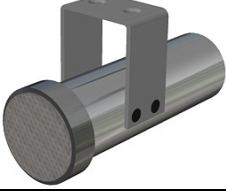
Part:	#	Description:	Old Reference:
PU*)	1	Jet S/M, depends on gas type and pressure	27
PU*)	1	Jet Holder S/M, depends on gas type and pressure	28
PM*)	1	Marking Plate M2, depends on gas type and pressure	40
PM*)	1	Venturi, depends on gas type and pressure	26
PM001	1	Reflector M2/ M3	21
PM026	1	Round Burner M2	22
PM040	1	Suspension Frame M2/ M3	23
PM062	1	Burnerpipe M2	24
PM085	1	T-piece special (for M-types) Incl. 2x PU036 – Screw M5x10 Incl. 1x PU038 – Thumb Screw T-piece M5x30x8	25
PU037	2	Screw S.S. M5x10 with spring ring	33
PU115 Or PU116	1	Safety Device without Hose Socket Incl. PU117 – Interior Coil Small Safety Device with Hose Socket Incl. PU117 – Interior Coil Small	30
PU120 Or PU121 Or PU122 Or PU123 Or PU124 Or PU127 Or PU128	1	Hose Socket 1/8" F 9mm Hose Socket 1/8" F 11mm Hose Socket 1/8" F 8mm smooth Bushing 1/8" F*3/8" M Bushing 1/8" F*1/2" M Special Connection Japan CGA Connection	31
PU150 or PM162	1 1	Thermocouple L=220mm or Thermocouple with integrated Clixon	29
PU320 Or PU321	1	Stainless Steel Filter standard M/S Filter M/S Heavy Duty	32
PU370	6	Rivet, stainless Ø4	36

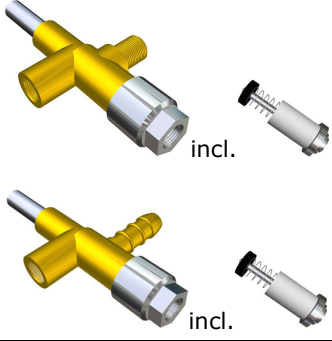
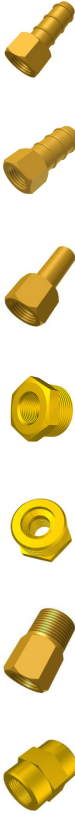
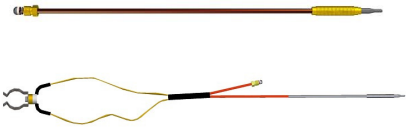
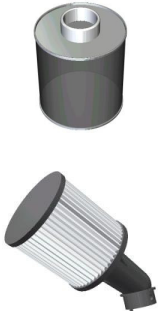
NOTES:

PU*) & PM*): Depends on gas type and pressure.

****:** This also depends on gas type and pressure!

Infrared Heater M2 Position Numbers

PU*)	Jet S/M, depends on gas type and pressure	
PU*)	Jet Holder S/M, depends on gas type and pressure	
PM*)	Marking Plate M2, depends on gas type and pressure	
PM*)	Venturi, depends on gas type and pressure	
PM001	Reflector M2/ M3	
PM026	Round Burner M2	
PM040	Suspension Frame M2/ M3	
PM062	Burner pipe M2	
PM085	T-piece special (for M-types) Incl. 2x PU036 – Screw M5x10 Incl. 1x PU038 – Thumb Screw T-piece M5x30x8	
PU037	Screw S.S. M5x10 with spring Ring	

<p>PU115</p> <p>Or</p> <p>PU116</p>	<p>Safety Device without Hose Socket Incl. PU117 - Interior Coil Small</p> <p>Safety Device with Hose Socket Incl. PU117 - Interior Coil Small</p>	
<p>PU120</p> <p>Or</p> <p>PU121</p> <p>Or</p> <p>PU122</p> <p>Or</p> <p>PU123</p> <p>Or</p> <p>PU124</p> <p>Or</p> <p>PU127</p> <p>Or</p> <p>PU128</p>	<p>Hose Socket 1/8" F 9mm</p> <p>Hose Socket 1/8" F 11mm</p> <p>Hose Socket 1/8" F 8mm smooth</p> <p>Bushing 1/8" F * 3/8" M</p> <p>Bushing 1/8" F * 1/2" M</p> <p>Special Connection Japan</p> <p>CGA Connection</p>	
<p>PU150</p> <p>Or</p> <p>PM162</p>	<p>Thermocouple L=220mm</p> <p>Thermocouple with integrated Clixon</p>	
<p>PU320</p> <p>Or</p> <p>PU321</p>	<p>Stainless Steel Filter standard M/S</p> <p>Filter M/S Heavy Duty</p>	
<p>PU370</p>	<p>Rivet, stainless Ø4</p>	